



TRIFECTA  
GOLD LTD.

A New Focus on the Tombstone Gold Belt

TSX.V: **TG** | OTCQB: TRRFF

2026/05



# Forward Looking Statements

Certain information regarding the Company contained herein may constitute forward-looking statements within the meaning of applicable securities laws. Forward-looking statements may include estimates, plans, expectations, opinions, forecasts, projections, guidance or other statements that are not statements of fact. Although the Company believes that the expectations reflected in such forward-looking statements are reasonable, it can give no assurance that such expectations will prove to have been correct. The Company cautions that actual performance will be affected by a number of factors, many of which are beyond the Company's control, and that future events and results may vary substantially from what the Company currently foresees. The Company's forward-looking statements are expressly qualified in their entirety by this cautionary statement.

All technical information contained in this corporate presentation has been approved by Jackson Morton, P.Geo., Trifecta Gold Ltd.'s Vice President and a qualified person for the purposes of National Instrument 43-101.



## Background

# Why Invest in Trifecta?

New focus on the highly prospective **Yukon Tombstone Gold Belt**, host of numerous large Reduced Intrusion Related Gold Systems (RIRGS) including Fairbanks Gold Mine, Eagle Gold Mine and Snowline Gold's Valley Deposit.



Tight share structure, dual listed in Canada and USA



Path to earn 100% interest in 11 projects in the heart of the Tombstone Gold Belt



Award winning Exploration Team



2024 exploration defined priority RIRGS targets at both Mt. Hinton and Rye



Initial 2025 drilling at Rye intersected a broad zone of sheeted quartz veins grading **1.02 g/t over 37 metres**



## Background

# Why Invest in Trifecta?

New Focus on the Tombstone Gold Belt

Tight Share Structure:

- 47 million shares outstanding (leverage)
- high insider ownership (over 29%)
- no seed stock (aligned with shareholders)

**People:** Exploration team responsible for the discovery of many Yukon deposits including both the highest-grade >1Moz gold deposits and the largest copper-gold deposit in the territory.

**Discovery potential:** First drilling at Rye returned broad intervals of gold bearing sheeted veins, validating the RIRGS exploration model.

**Recent deposits discovered in the belt:**

Snowline Gold's Valley, Sitka Gold's RC, Banyan Gold's AurMac, and Victoria Gold's Raven.

**Major Miners:** This flurry of new discoveries has led to investments in the belt by B2Gold, Hecla Mining and Alpayana.

## Project acquisitions:

- Trifecta can earn a 100% interest in Mt. Hinton, Rye and 9 other projects in the belt subject to a 2% NSR.
- Initial 70% earn-in for \$6 million total expenditures over 4 years.
  - Year 1: \$500,000 (Completed in 2024)
  - Year 2: \$1,000,000 (Completed in 2025)
  - Year 3: \$1,500,000 (Completed in 2025 ahead of schedule)
  - Year 4: \$3,000,000
- Additional 30% interest for 9.99% share issuance after earn-in subject to a 2% NSR with a buy-down to 1%.
- The Project settings closely resemble recent discoveries made by others in the belt.
- Includes large databases generated from over \$8 million in previous exploration expenditures.
- Mt. Hinton and Rye have responded well to initial drilling, and numerous targets are yet to be drill tested.





## Team

# Management

### **Richard Drechsler, B.Sc.** President & CEO, Director

Mr. Drechsler has worked in the mining/mineral exploration industry since 2005. He began working directly with publicly listed exploration Companies in 2010 with roles ranging from investor relations and First Nation communications to financing and deal making.

### **Glenn Yeadon, B.comm., LLB** Secretary

Glenn Yeadon is a barrister and solicitor practicing primarily in the field of securities law. He has been a partner with Tupper Jonsson & Yeadon or an associate of the firm (through a personal law corporation controlled by him) from 1983 to present.

### **Quinn Martin, CPA, CA** Chief Financial Officer

Mr. Martin has over 16 years experience working with public companies in a variety of sectors. He currently provides CFO services to reporting issuers working in the mineral resource sector and also provides financial reporting consultancy services to numerous public companies in varying industries on Canadian Exchanges. Previously, Mr. Martin had spent 13 years working in assurance services for public companies at Davidson & Company LLP, where he was a Principal until his departure in 2018. Mr. Martin is currently a Principal at Donaldson Brohman Martin CPA Inc.

### **Jackson Morton, B.Sc., P.Geo.** Vice President

Mr. Morton has over a decade of experience leading mineral exploration programs across North America as a former Principal and Senior Geologist with Archer, Cathro. Mr. Morton obtained a Bachelor of Science in Earth Sciences from Simon Fraser University in 2013 and is a registered Professional Geologist in British Columbia. He is a Technical Advisor with Silver Range Resources Ltd., and the outgoing Chair of the Vancouver Mining Exploration Group (M.E.G.).

# Independent Directors

## **Rosie Moore, M.Sc.**

---

Ms. Moore is an exploration geologist and analyst whose 35 plus-year career in mining and metals began as a site exploration geologist on projects in Nevada, Yukon, Peru and Labrador, before taking on corporate management and analyst roles at Diamond Fields Resources Inc., Yorkton Securities, Pan American Silver Corp. and Bear Creek Mining Corporation. Ms. Moore then transitioned into investment and capital markets focus as a partner/analyst with Geologic Resource Partners LLC, a Boston-based, mining-focused, globally invested equity hedge fund. Ms. Moore currently serves as a director of Torex Gold. She served as a director of Dolly Varden Silver Corp. from 2013 to 2016 and also served as Dolly Varden's interim CEO and President from 2015 to 2016. She was formerly a director of Continental Gold Inc. and Evergold, and also served as CEO and a director of Geoinformatics Exploration Inc., managing its take-over of Rimfire Minerals Corporation to yield Kiska Metals Corporation. Ms. Moore holds both a Master of Science and a Bachelor of Science in Geology from Kent State University in Ohio.

## **Bradley Shisler, B.Sc., B.A., MBA**

---

Mr. Shisler is a co-founder of Condire Investors in Dallas, Texas where he serves as a Managing Director. Previously, he served as a partner in Blue River Partners, L.L.C. Prior to that time, Mr. Shisler was a principal of Willis Stein & Partners, a Chicago-based private equity fund with \$3 billion of equity capital under management. Prior to Willis Stein, he was an associate at Simmons & Company International, a Houston-based investment bank focused on the oilfield services industry.

## **Rachele Gordon, CPA, CA**

---

Ms. Gordon holds a Bachelor of Commerce from the University of Calgary and is a Chartered Professional Accountant in British Columbia. She currently runs her own firm R. Gordon CPA Inc. with a focus on personal and corporate tax planning. Previously she was a Tax Specialist with MNP LLP, one of the largest full-service chartered professional accountancy and business advisory firms in Canada.

## **Kai Hoffmann, B.A.**

---

Mr. Hoffmann has been active in the junior mining industry since 2008 and is the Founder and Managing Director of Soar Financial, an international corporate communications firm focused on the junior mining industry. He is also CEO of Vancouver based Oreninc, a data mining company, tracking the financing activity of mining companies on TSX, TSX-V and CSE. Mr. Hoffmann also serves as an independent director of Labrador Gold Corp., a TSX-V listed gold exploration company.





## Team

# Technical Committee

### **Rob Carne, M.Sc., P.Geo.**

Mr. Carne has been actively involved in mineral exploration, principally in the Yukon since 1972, and he has authored or co-authored a number of technical papers on Yukon mineral deposits. He was a co-recipient of the 2012 H.H. "Spud" Huestis Award for excellence in prospecting and mineral exploration.

### **Moira Smith, Ph.D., P.Geo.**

Dr. Smith has a Ph.D. in Geology from the University of Arizona and is a P.Geo. (British Columbia). She has held board or executive positions with numerous industry associations, served as president of the Society of Economic Geologists and is a recent winner of the Colin Spence award from the Association for Mineral Exploration of B.C. Dr. Smith is also a director of Discovery Metals Corp. and Galiano Gold Company.

### **Archer, Cathro & Associates (1981) Limited**

Yukon focused, award-winning exploration team, discovered both of Yukon's highest grade >1-million-ounce gold deposits.

### **Fred Graybeal, Ph.D.**

Dr. Graybeal retired as chief geologist of ASARCO in 2003 and now works with the U.S. Geological Survey on a porphyry copper research project in Arizona, provides consulting services, and acts as a director or advisor to several publicly-traded exploration and mining companies.

### **Ryan Schedler, B.Sc. MBA**

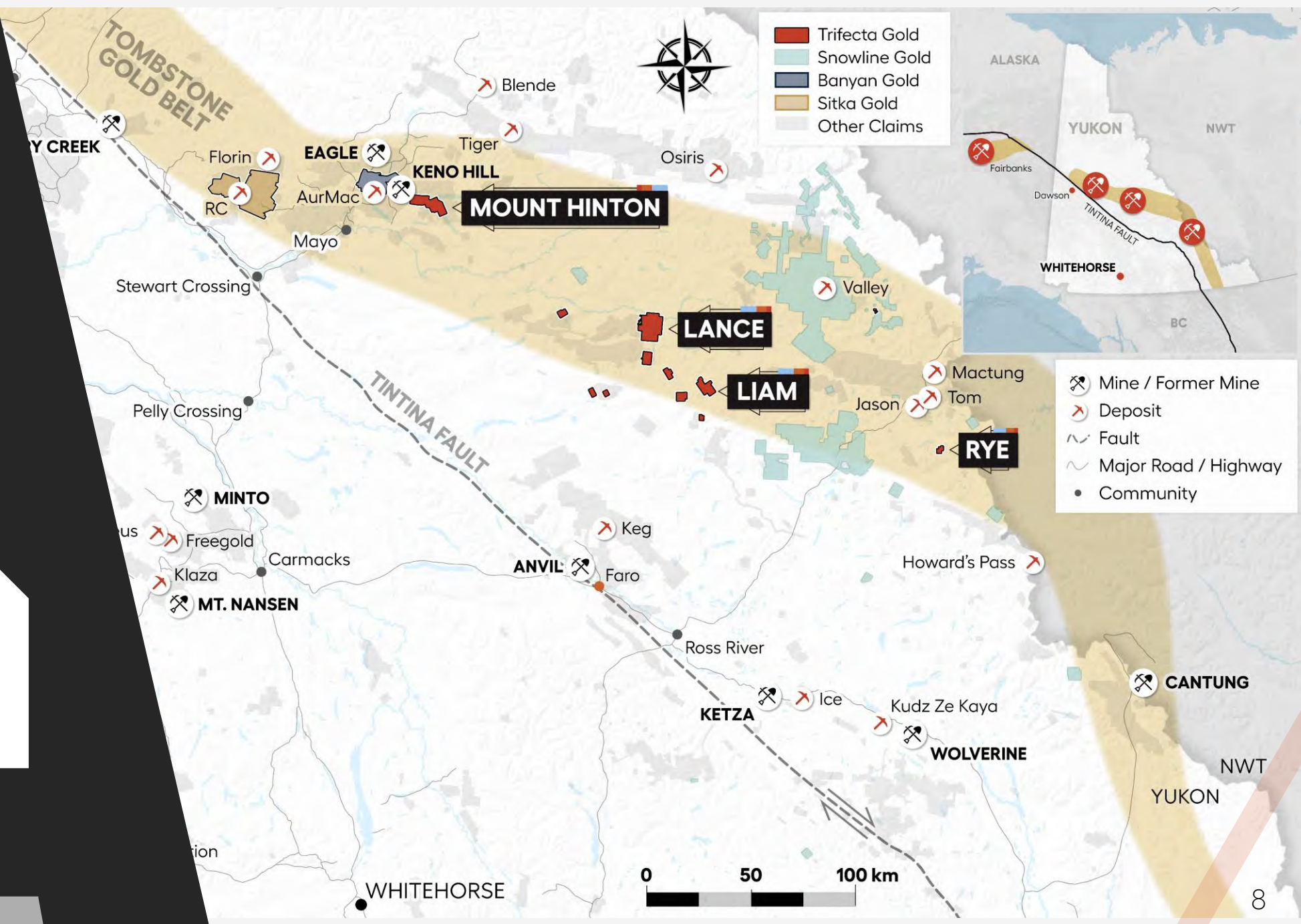
Mr. Schedler is an investment professional with a technical background and over twenty years of experience in natural resources and related industries. He co-founded Condire Investors in 2012 and serves as its Managing Director.

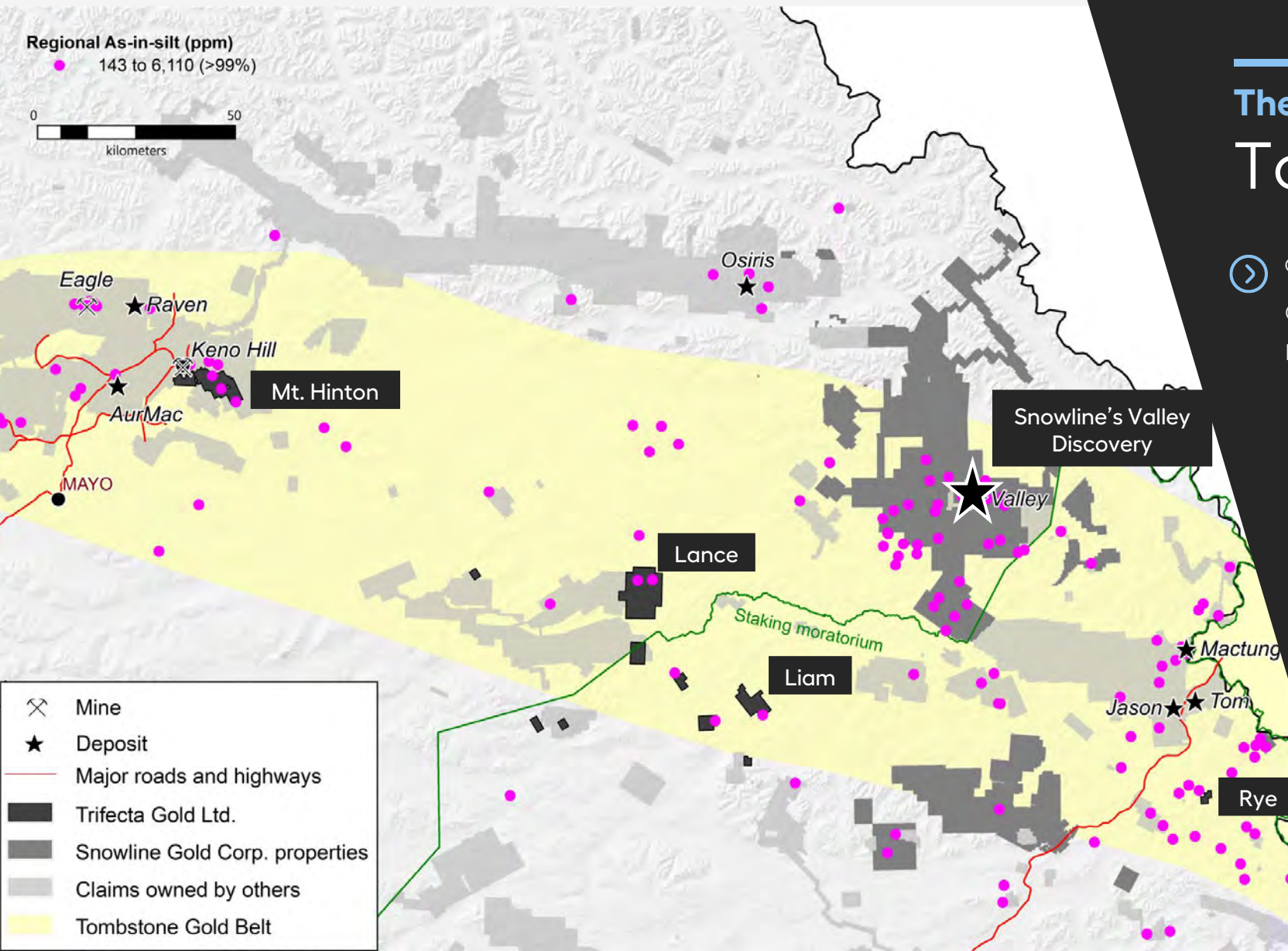
# The Opportunity

## Tombstone Gold Belt

Trifecta Gold has secured an option to acquire up to a 100% interest in a portfolio of highly prospective projects from Strategic Metals subject to a 2% NSR

*Gold endowment in the district has increased by over 20 million ounces since May 2020.*





## The Opportunity

# Tombstone Gold Belt

➤ 99% percentile arsenic stream sediment anomalies highlight major deposits and mines in the district

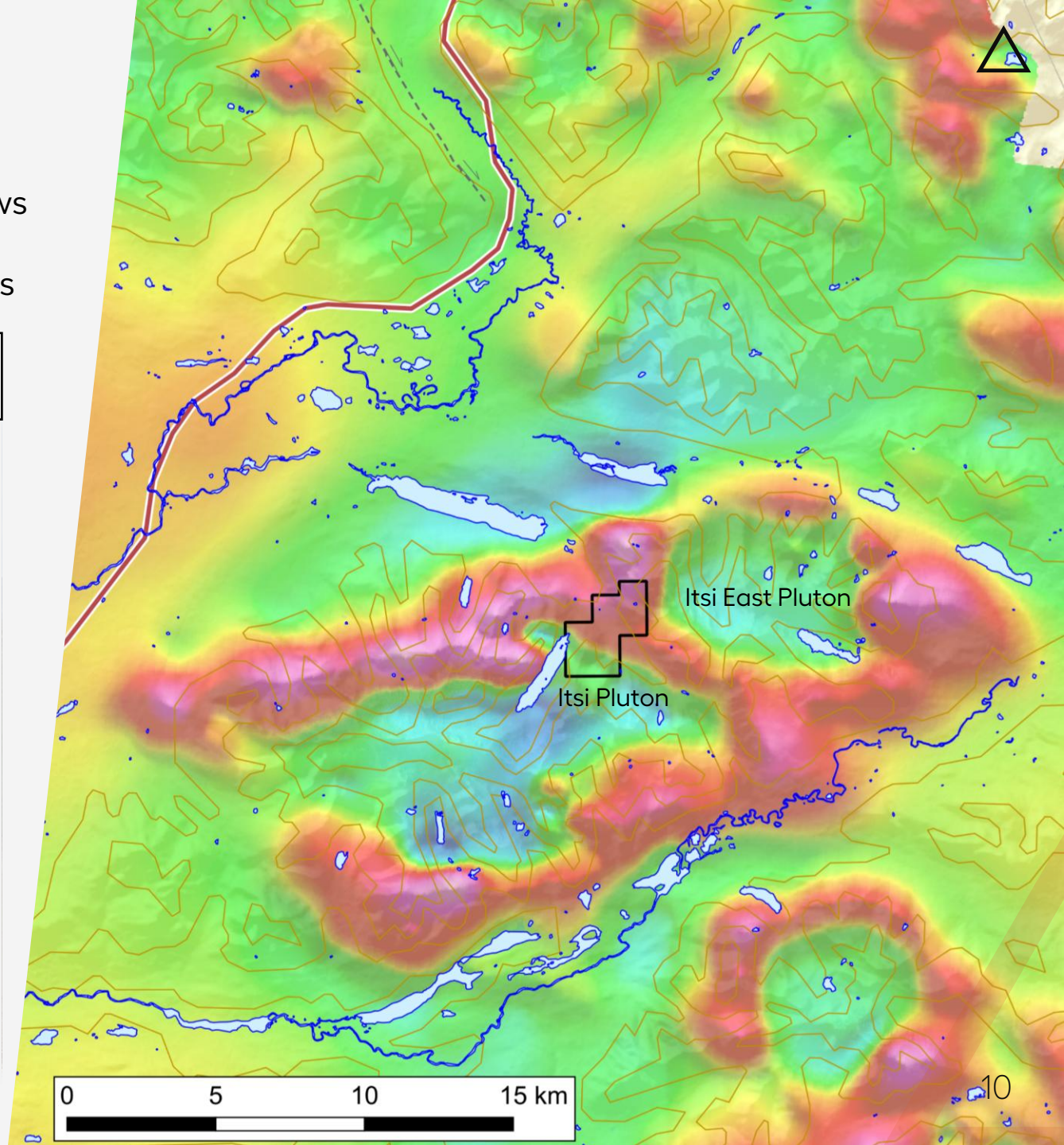
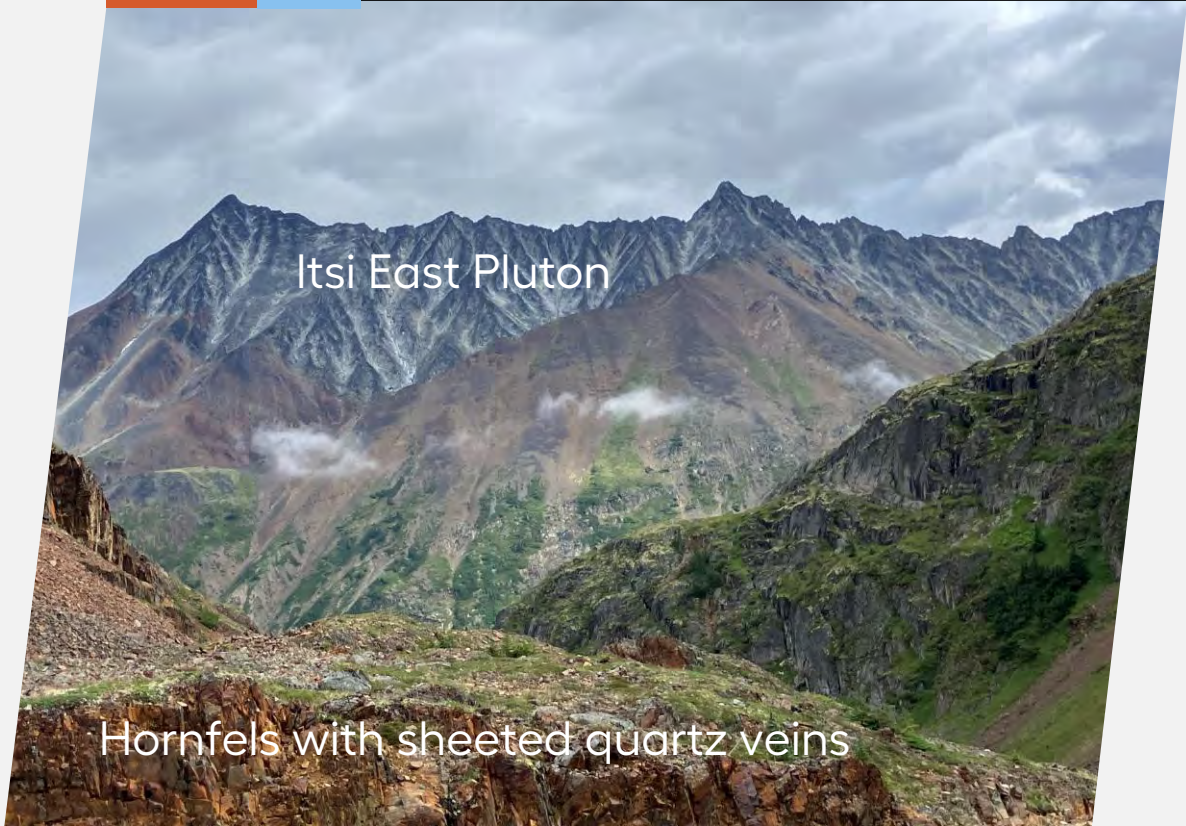
➤ Follow-up work done by previous operators included widespread geochemical and geophysical surveys which defined compelling targets for Trifecta Gold

Rye Project: Located 14 km southeast of the North Canal Road, and 20 km south of the Macpass Camp of Fireweed Metals Corp.

## Rye Project - Regional Magnetics

Itsi and Itsi East plutons present as two oblate magnetic lows marking the centres of the intrusions, with magnetic high shoulders representing pyrrhotite surrounding the intrusions

Conspicuous, gossanous hornfels surrounding the Itsi pluton



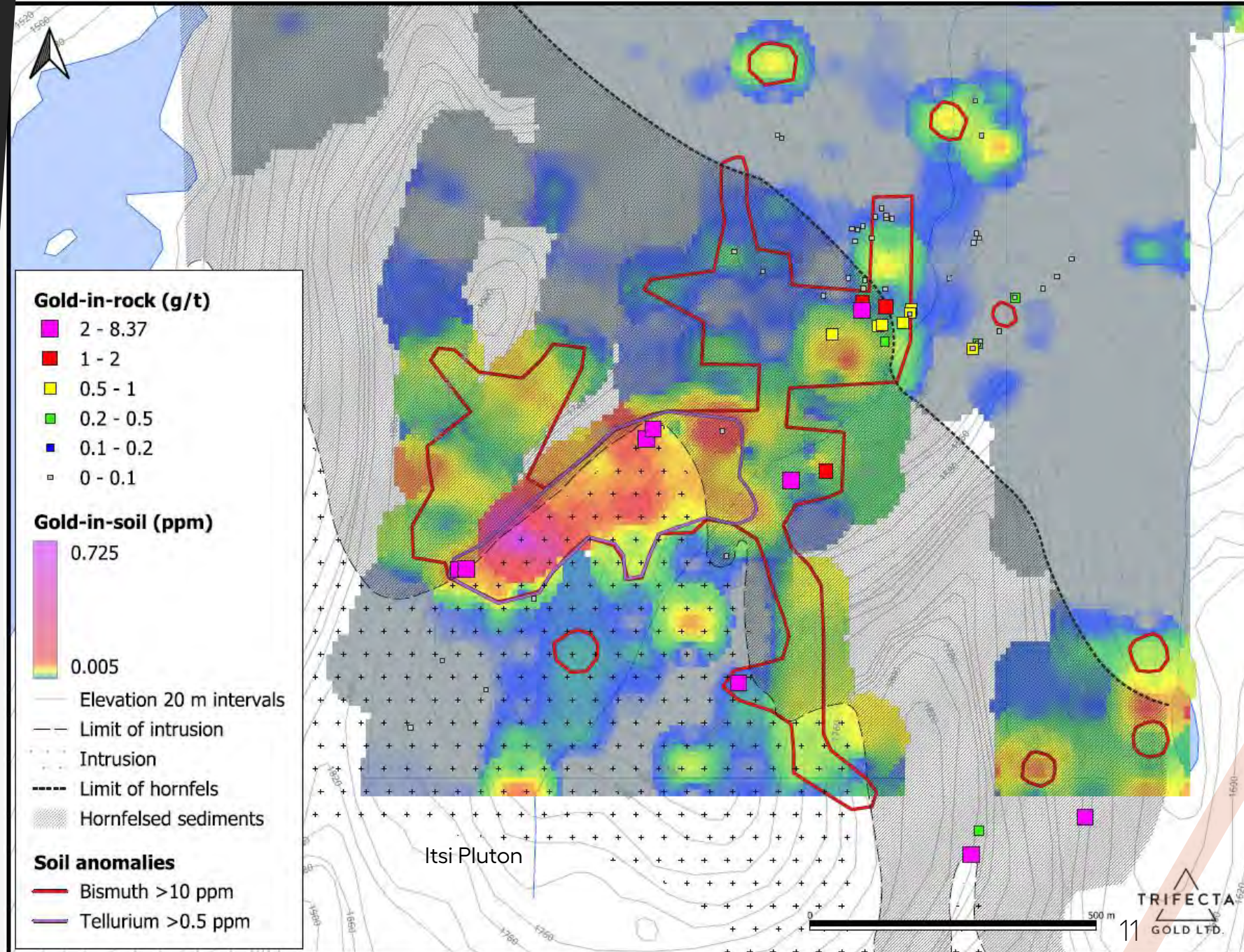
# Rye Property

Gold, arsenic, bismuth and tellurium geochemistry associated with a mid-cretaceous intrusion

2024 rock samples grading 1 - 8.37 g/t gold adjacent to a mid-cretaceous intrusion

Sheeted quartz veining within hornfelsed metasediments discovered in 2024

2025 rock sampling returned up to 21.1 g/t gold and 8550 ppm bismuth



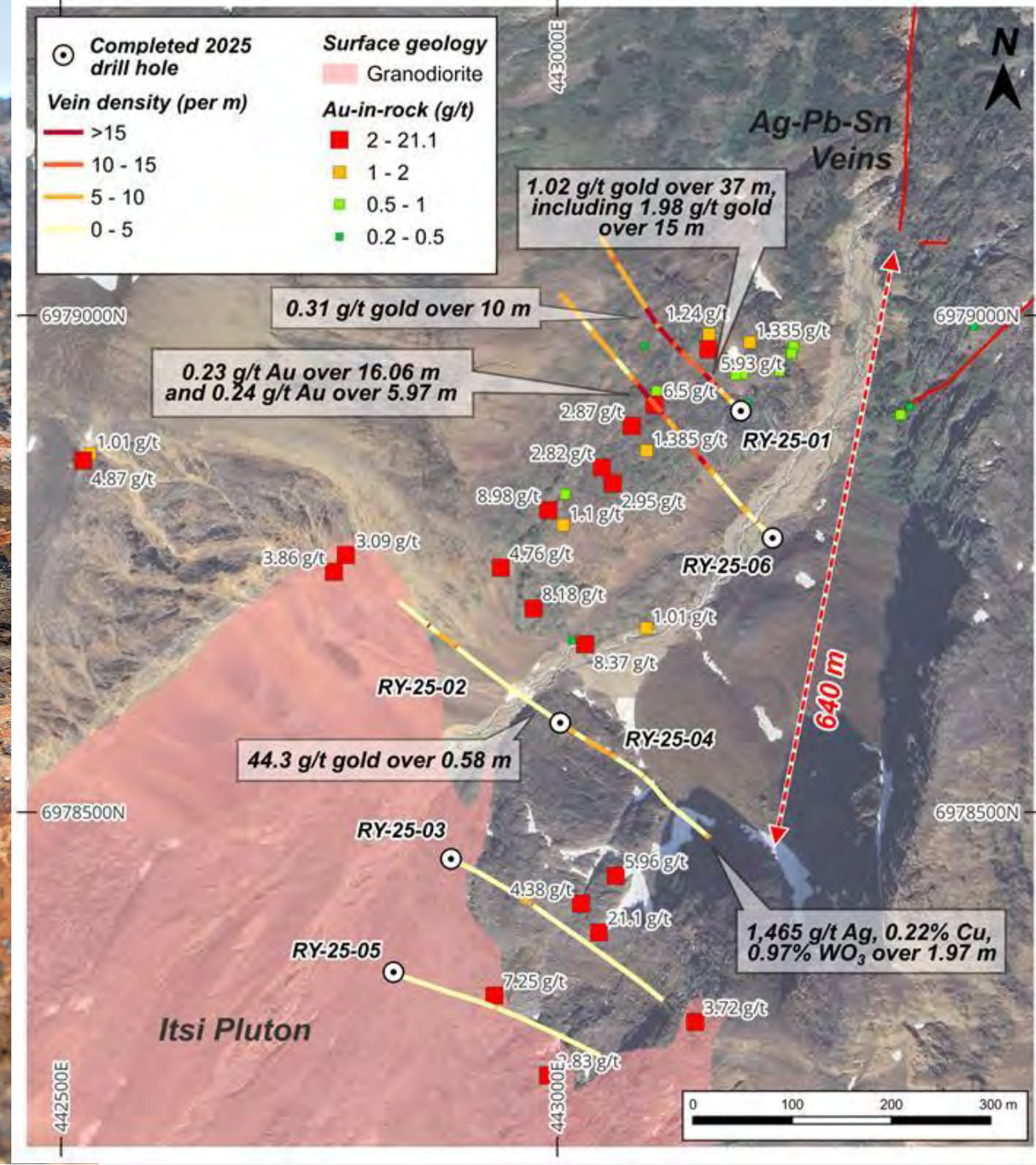
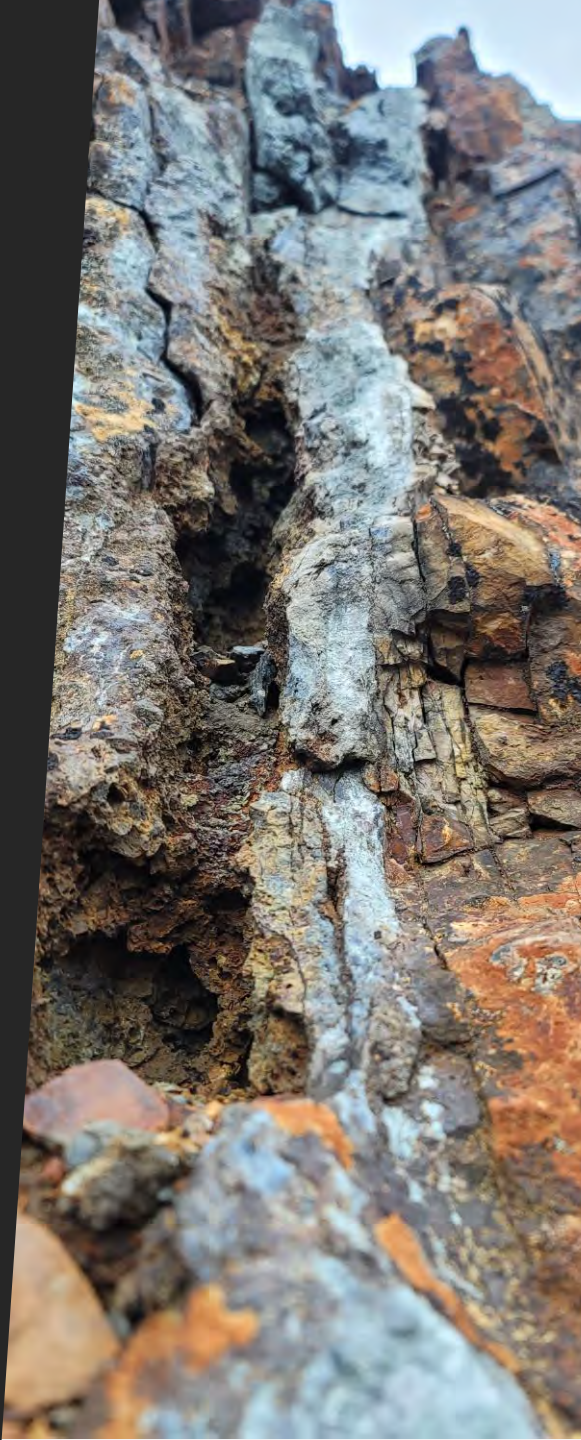
# Rye Property

Inaugural drill program in 2025

First hole confirmed broad zones of gold mineralization:  
37 m @ 1.02 g/t gold and  
10 m @ 0.31 g/t gold

Second hole confirmed potential for higher-grades in the system:  
0.58 m @ 44.3 g/t gold

RY-25-04 bottomed in 1.97 m @ 1,465 g/t silver.  
640 metres from known silver veins with historical widths up to 4 metres



# Rye Property

Inaugural drill program

RY-25-01, located approximately 400 m from the mapped extent of the Itsi Pluton, targeted an area of intense sheeted veining in outcrop



RY-25-01: 37 m @ 1.02 g/t gold including  
15 m @ 1.98 g/t gold outlined in red



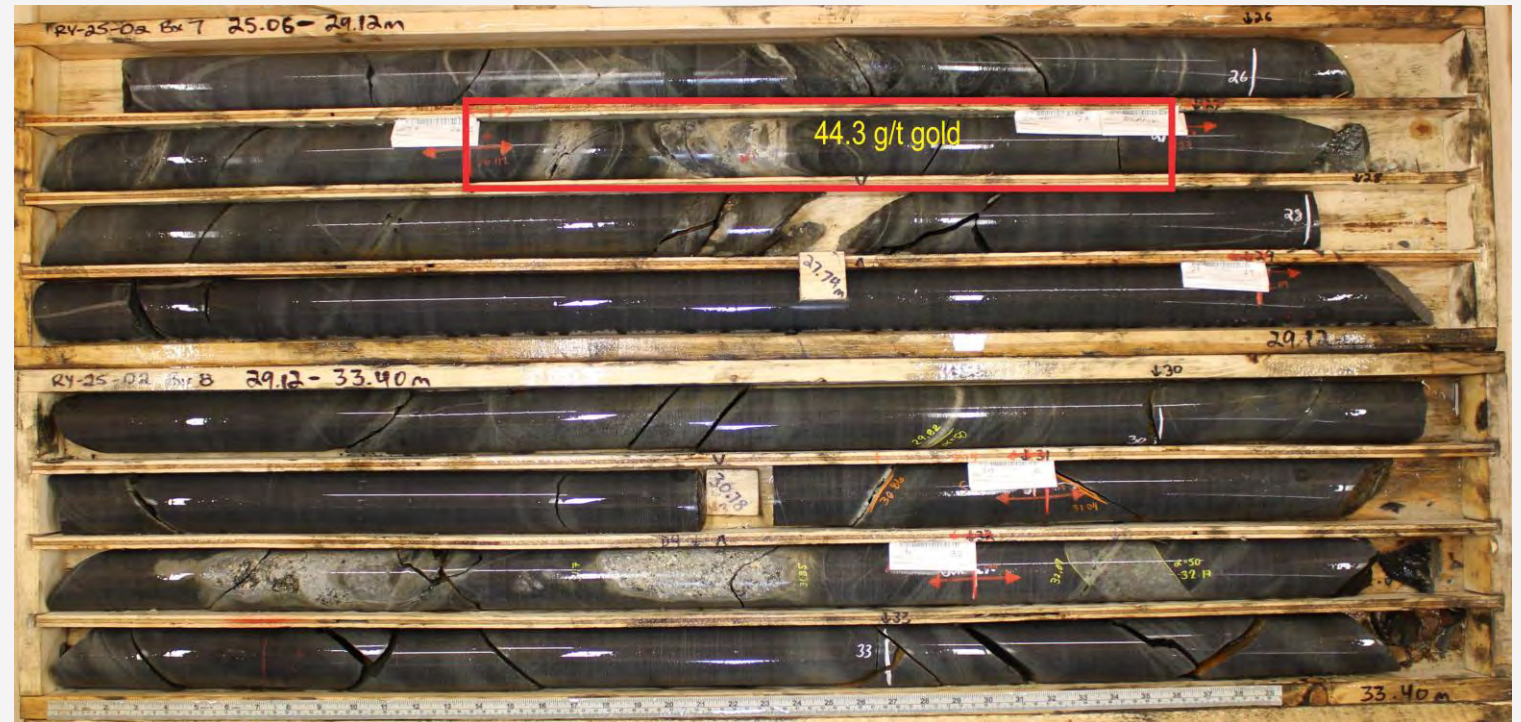
## Rye Property

Inaugural drill program

RY-25-02, located over 350 m south of RY-25-01, intersected high-grade gold near the intrusive contact



RY-25-02 returned 44.3 g/t gold over 0.58 metres



Drill core from hole RY-25-02, (25.06 m to 33.40 m) demonstrating hornfelsed siliciclastics along with several narrow intervals of altered granodiorite.

## Rye Property

Inaugural drill program



## High Grade Silver Discovery

RY-25-04 returned **1,465 g/t silver** over 1.97 metres  
Full Width Unknown  
Includes 0.22% Cu and 0.97%  $WO_3$



Drill core from hole RY-25-04, (276.05 m to 277.98 m) Fault gouge with high-grade silver

## Rye Project

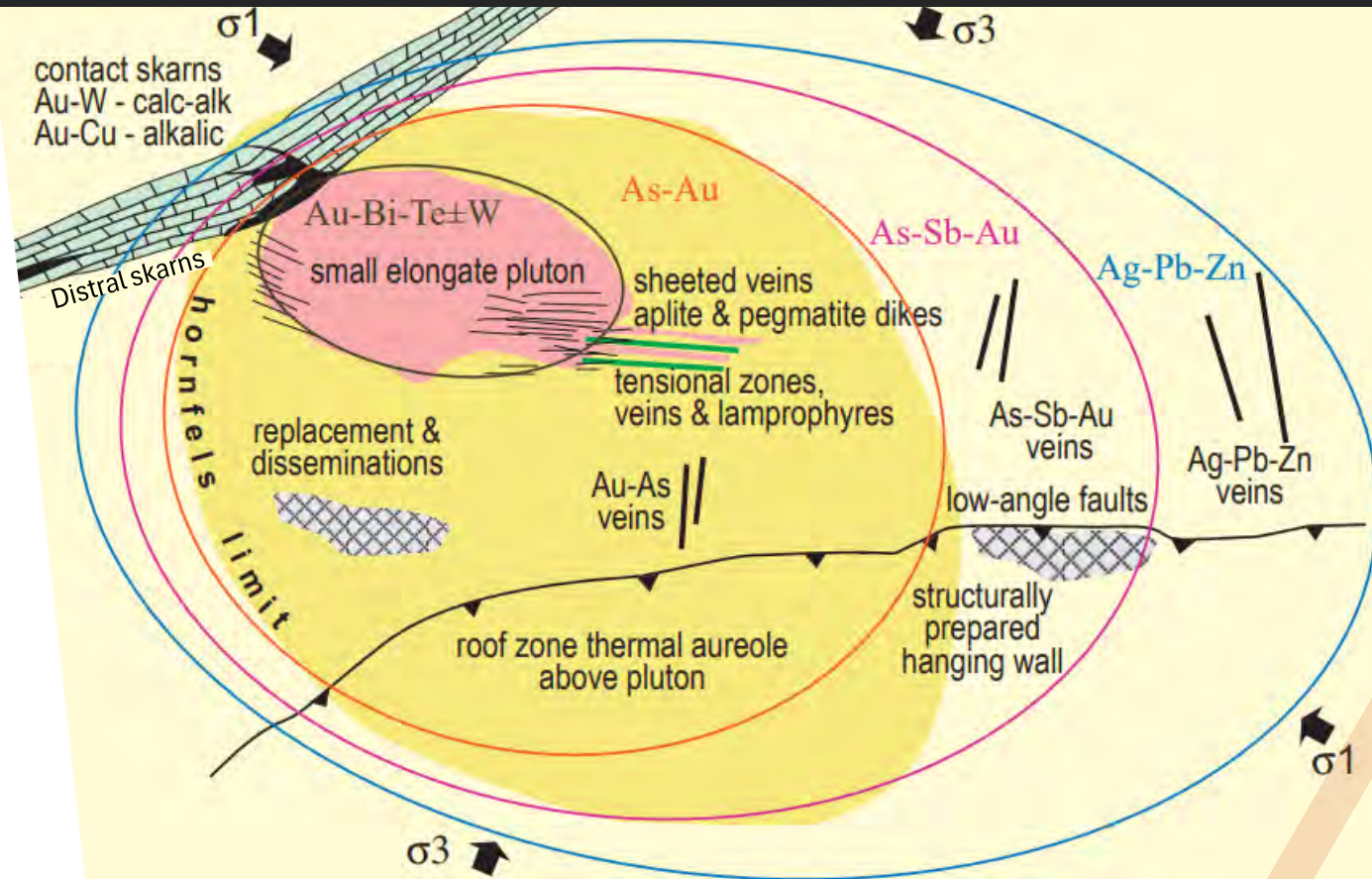
# Reduced Intrusion Related Gold Systems (RIRGS)

Abundant gold-rich sheeted veining on the margin of a mid-Cretaceous pluton

Historically known silver-zinc veins located outside the limit of hornfels discovered in the 1950s

The contact between the Itsi pluton and the surrounding sediments is intensely altered and with a high correlation between Au-Bi-Te

General plan model of RIRGS from the Tintina Gold Province. Of note are the wide range of mineralization styles and geochemical variations that vary predictably outward from a central pluton. Scale is dependent on the size of the exposed pluton, which is likely to range from 100m to 5km in diameter. Modified from Hart et al. (2002)



## Mt. Hinton

# The Golden Core of a Legendary Precious Metals Mining Camp

Mt. Hinton, Granite North Zone specimen sample collected August 2023. Photo: Jean Pautler, P.Geo.

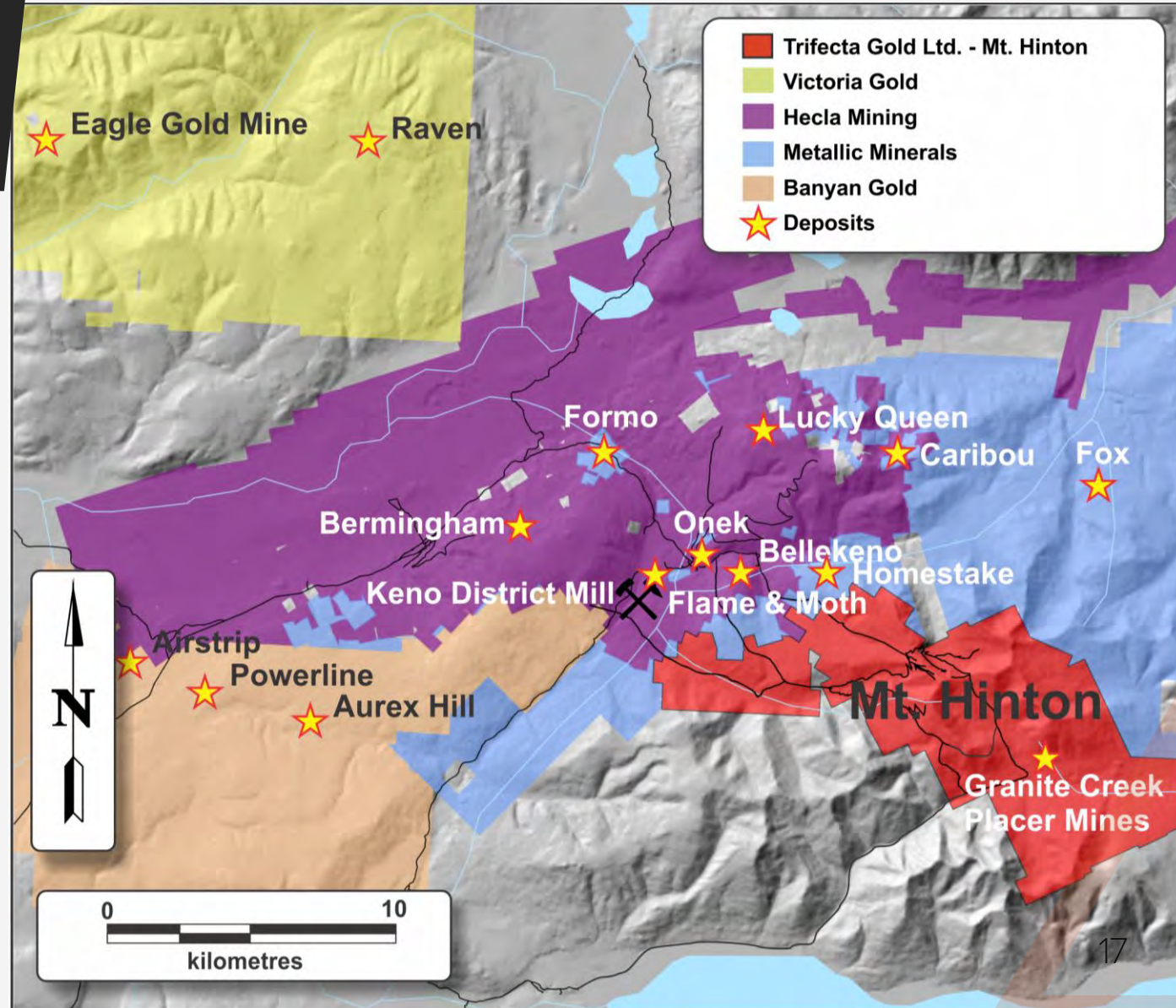
- ✓ High-grade precious metals veins have been mined at Keno Hill for over 100 years.
- ✓ Mt. Hinton covers the direct extension of Keno Hill Quartzites.
- ✓ Historical gold/silver ratios and lack of road access resulted in little exploration at Mt. Hinton vs. Keno Hill.
- ✓ A 2016 placer discovery in the Granite Creek basin, below glacial till, provided road access.

### Recent results:

Over 60 showings with recent discoveries including 200 g/t gold with 90 g/t silver over 1.2 m

Diamond drilling highlights from 2020 program:

- 6.44 g/t gold over 12.14 m (SW Zone)
- 3.86 g/t gold and 182 g/t silver over 9.75 m (SW Zone)
- 6.74 g/t gold and 186 g/t silver over 7.25 m (Granite North Zone)



# Mt. Hinton

## Abundant Placer Gold

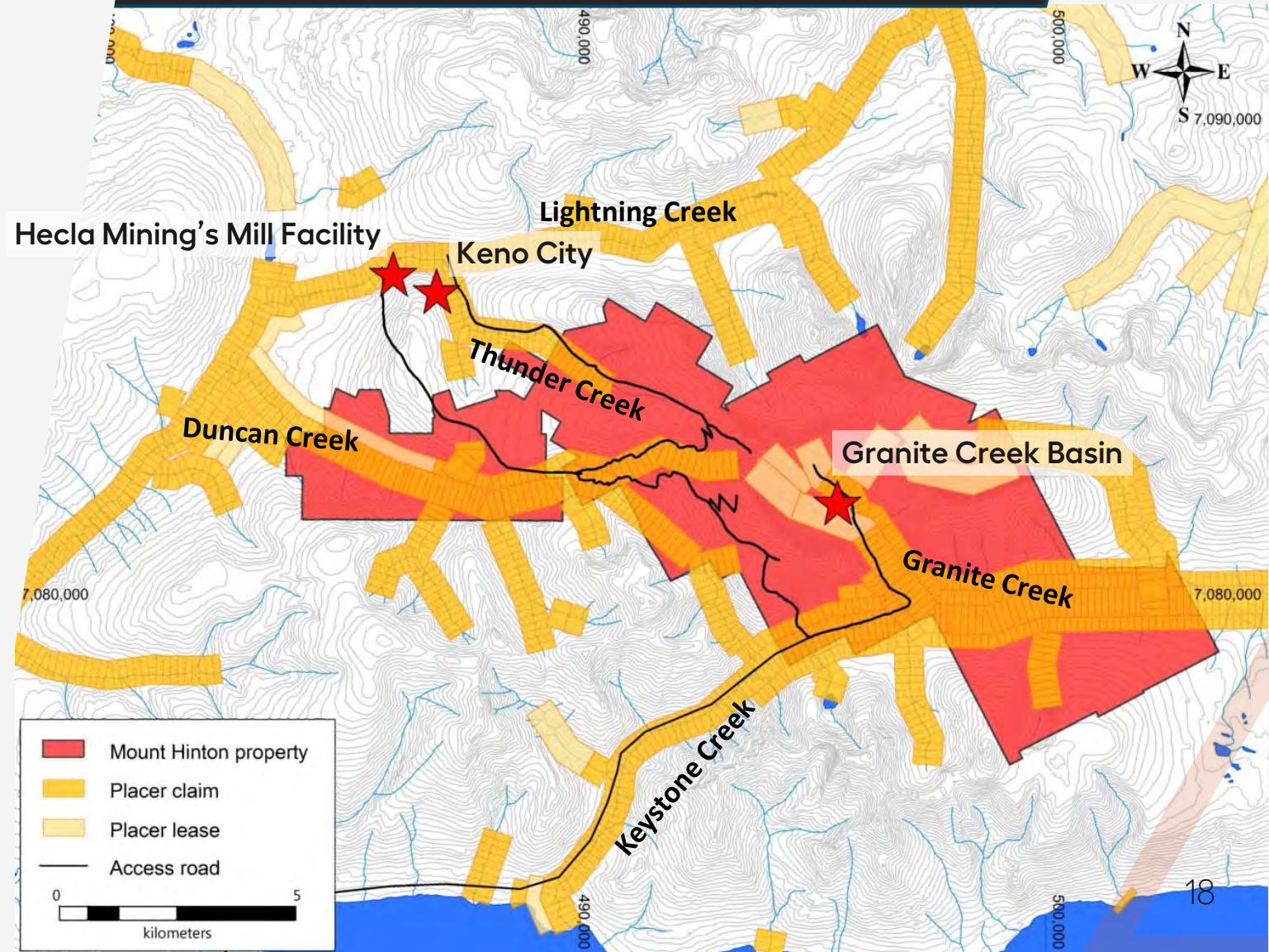
Reported crude ounces (1978-2025)	
Duncan Creek	39,920 oz
Lightning Creek	11,627 oz
Keystone Creek	324 oz
Thunder Creek	7,751 oz
<b>Granite Creek* 2017-2025</b>	<b>23,120 oz</b>
<b>Total</b>	<b>82,742 oz</b>

\*Granite Creek discovery in 2016

Photo credit: Stuart Gray – Earth & Iron Inc.



- ✓ All creeks draining the project area host placer mines
- ✓ Road accessible form North and South

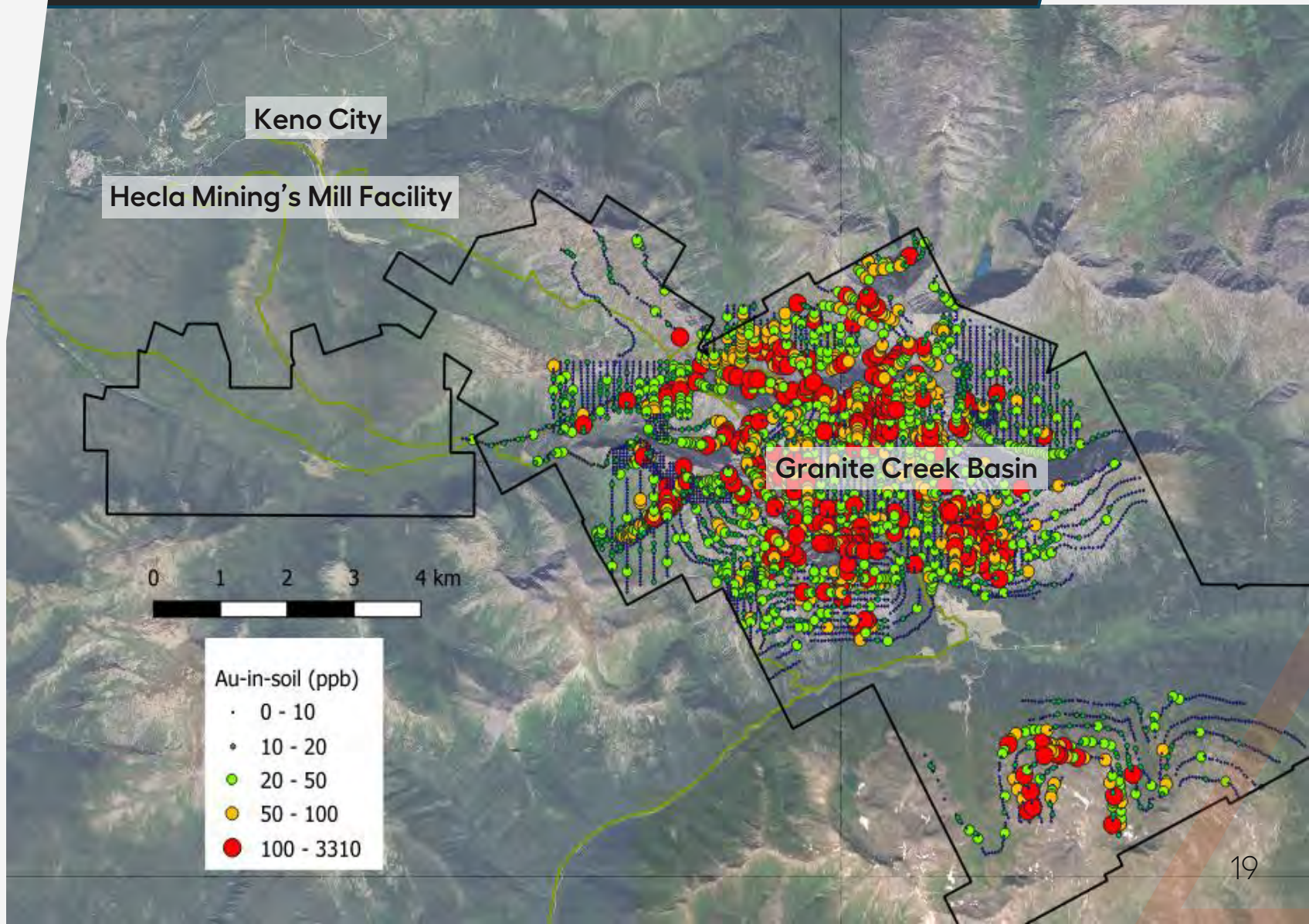


# Mt. Hinton

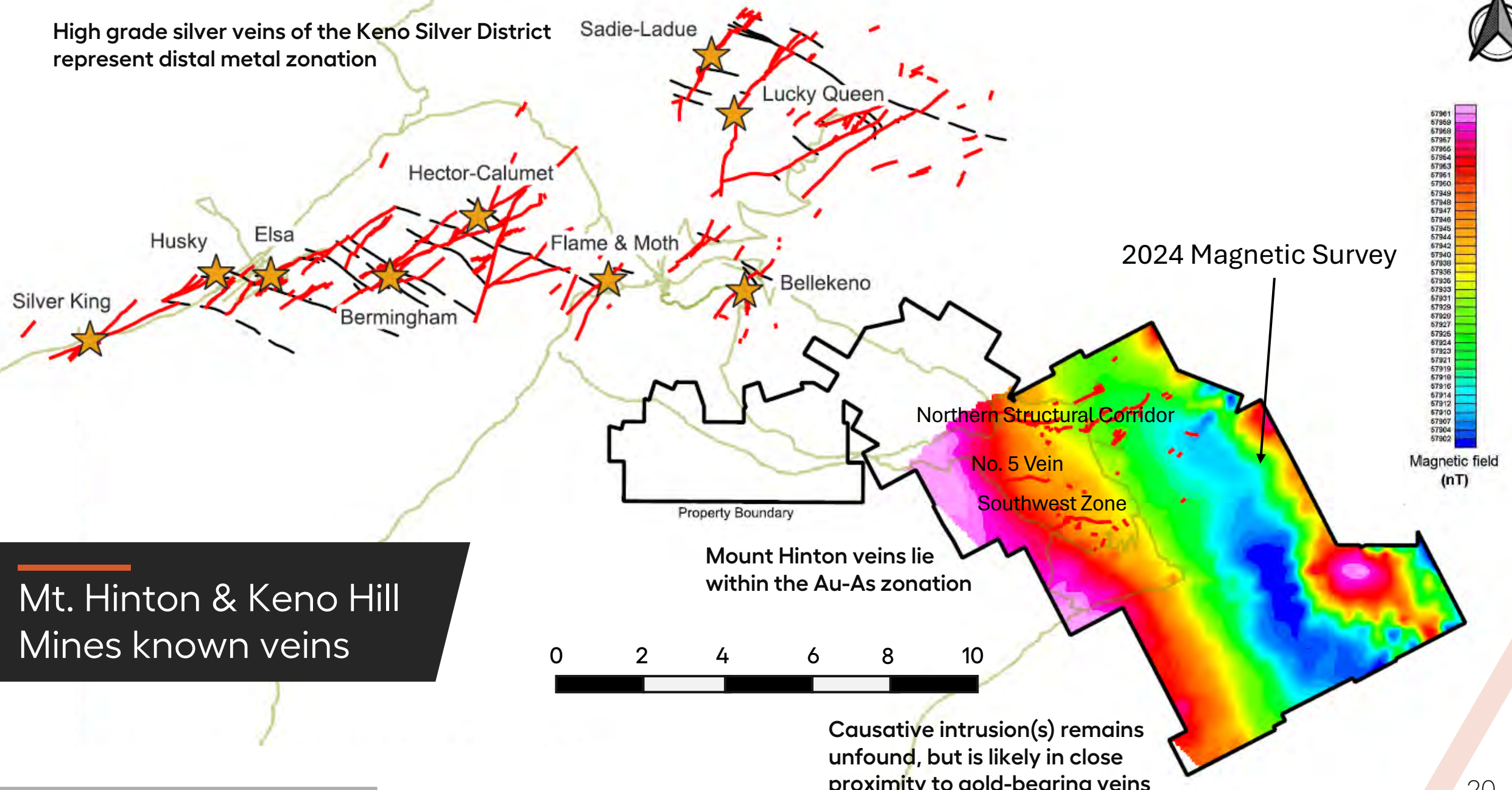
## The Golden Core of a Legendary Precious Metals Mining Camp



- ✓ Mult-square kilometre gold-in-soil geochemical response
- ✓ Multiple large-scale quartz veins identified
- ✓ Veins are more gold-rich than Keno and host visible gold



High grade silver veins of the Keno Silver District represent distal metal zonation



Mt. Hinton & Keno Hill Mines known veins

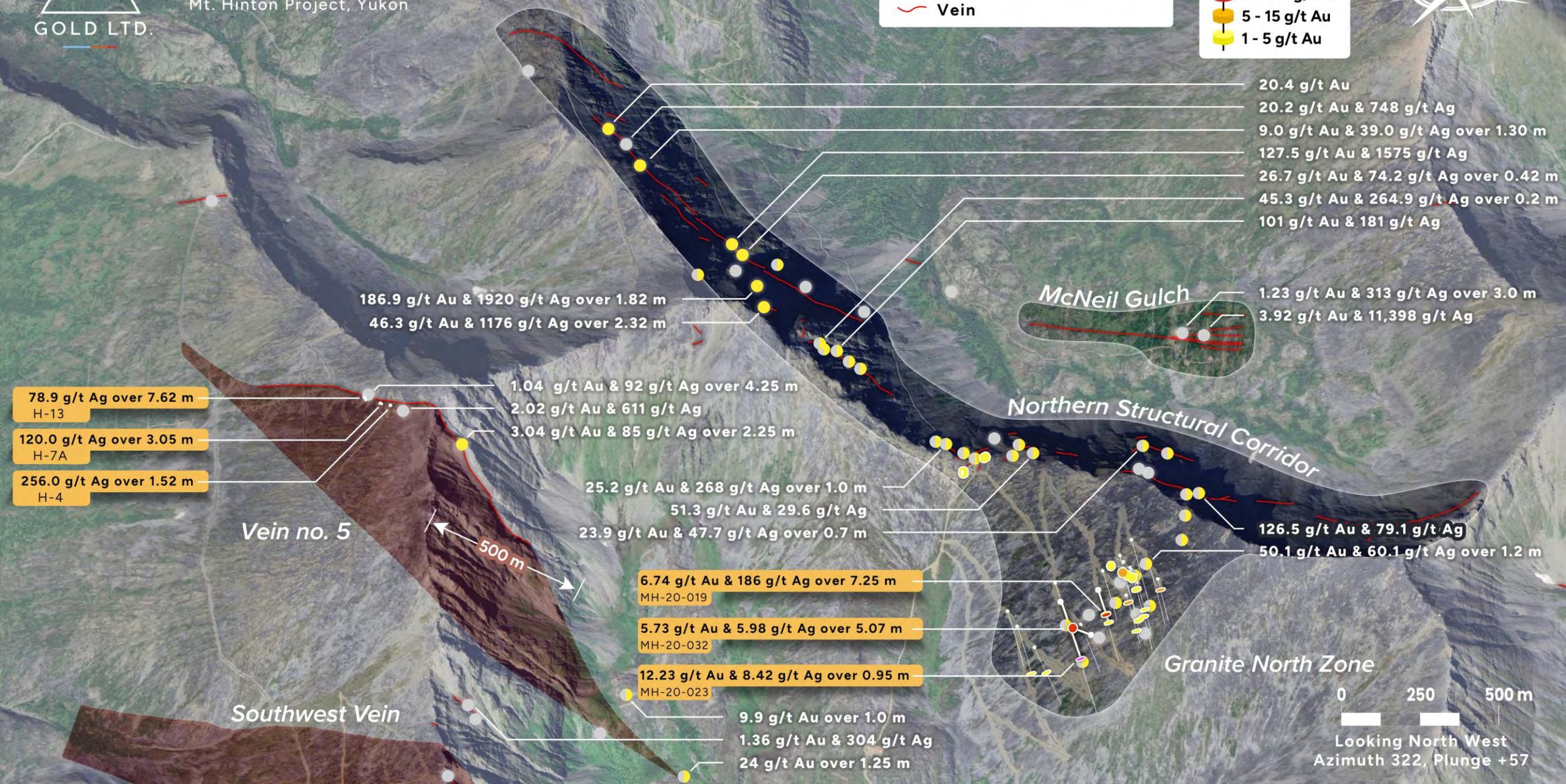
Mount Hinton veins lie within the Au-As zonation

Causative intrusion(s) remains unfound, but is likely in close proximity to gold-bearing veins

**TRIFECTA** Major Vein Trends  
 Mt. Hinton Project, Yukon  
 GOLD LTD.

- Ag Rock Samples > 50 g/t
- Au Rock Samples > 5 g/t
- Vein

- Assays**
- > 25 g/t Au
  - 15 - 25 g/t Au
  - 5 - 15 g/t Au
  - 1 - 5 g/t Au



78.9 g/t Ag over 7.62 m  
H-13

120.0 g/t Ag over 3.05 m  
H-7A

256.0 g/t Ag over 1.52 m  
H-4

186.9 g/t Au & 1920 g/t Ag over 1.82 m  
46.3 g/t Au & 1176 g/t Ag over 2.32 m

1.04 g/t Au & 92 g/t Ag over 4.25 m  
2.02 g/t Au & 611 g/t Ag  
3.04 g/t Au & 85 g/t Ag over 2.25 m

25.2 g/t Au & 268 g/t Ag over 1.0 m  
51.3 g/t Au & 29.6 g/t Ag  
23.9 g/t Au & 47.7 g/t Ag over 0.7 m

6.74 g/t Au & 186 g/t Ag over 7.25 m  
MH-20-019

5.73 g/t Au & 5.98 g/t Ag over 5.07 m  
MH-20-032

12.23 g/t Au & 8.42 g/t Ag over 0.95 m  
MH-20-023

9.9 g/t Au over 1.0 m  
1.36 g/t Au & 304 g/t Ag  
24 g/t Au over 1.25 m

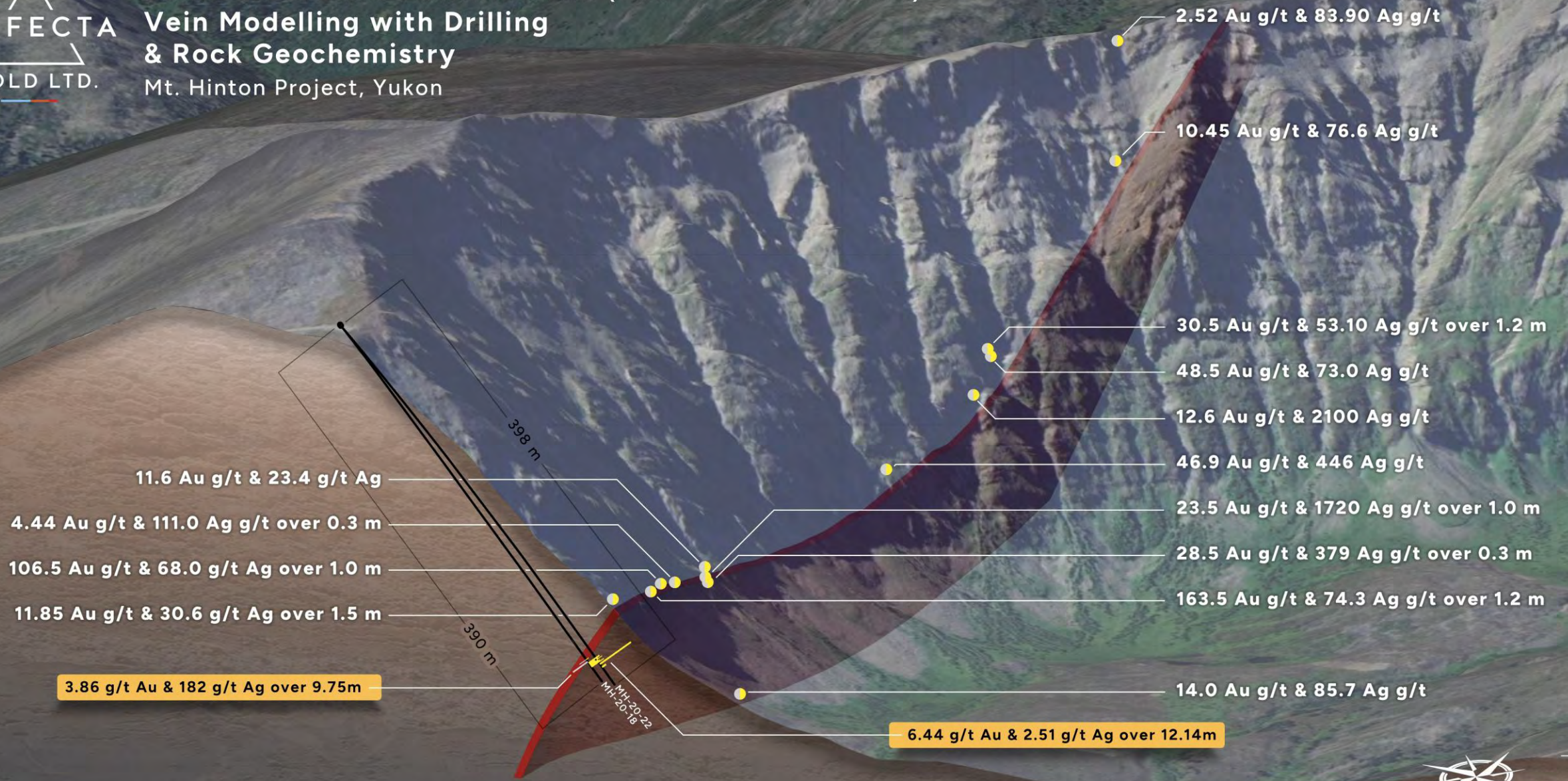
20.4 g/t Au  
20.2 g/t Au & 748 g/t Ag  
9.0 g/t Au & 39.0 g/t Ag over 1.30 m  
127.5 g/t Au & 1575 g/t Ag  
26.7 g/t Au & 74.2 g/t Ag over 0.42 m  
45.3 g/t Au & 264.9 g/t Ag over 0.2 m  
101 g/t Au & 181 g/t Ag

1.23 g/t Au & 313 g/t Ag over 3.0 m  
3.92 g/t Au & 11,398 g/t Ag

126.5 g/t Au & 79.1 g/t Ag  
50.1 g/t Au & 60.1 g/t Ag over 1.2 m

0 250 500 m

Looking North West  
Azimuth 322, Plunge +57



- Au Rock Samples > 10 g/t
- Ag Rock Samples > 50 g/t
- Vein

0 75 150 m

Looking South West  
Azimuth 245, Plung +11

## Mt. Hinton

High-grade gold vein  
-Southwest Zone



MH-20-022: 12.14 m @ 6.44 g/t gold  
and 2.51 g/t silver

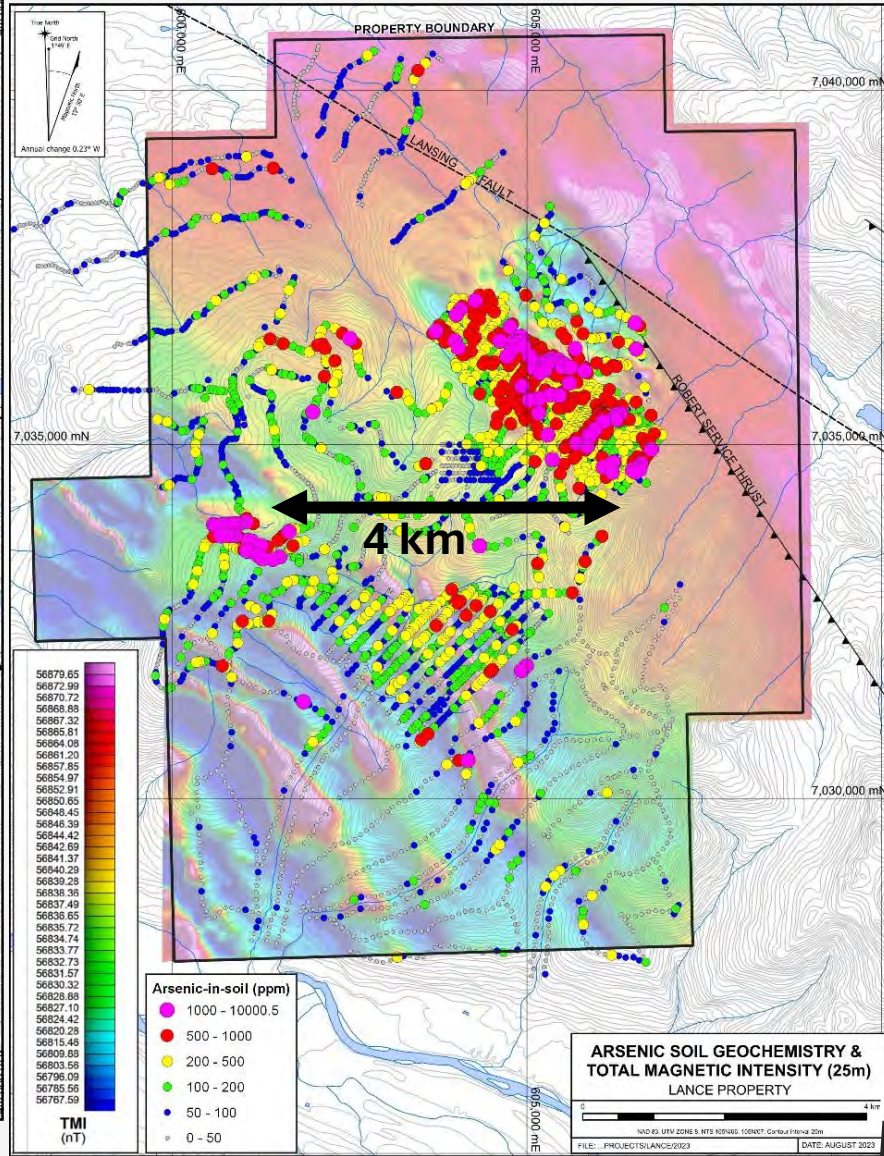
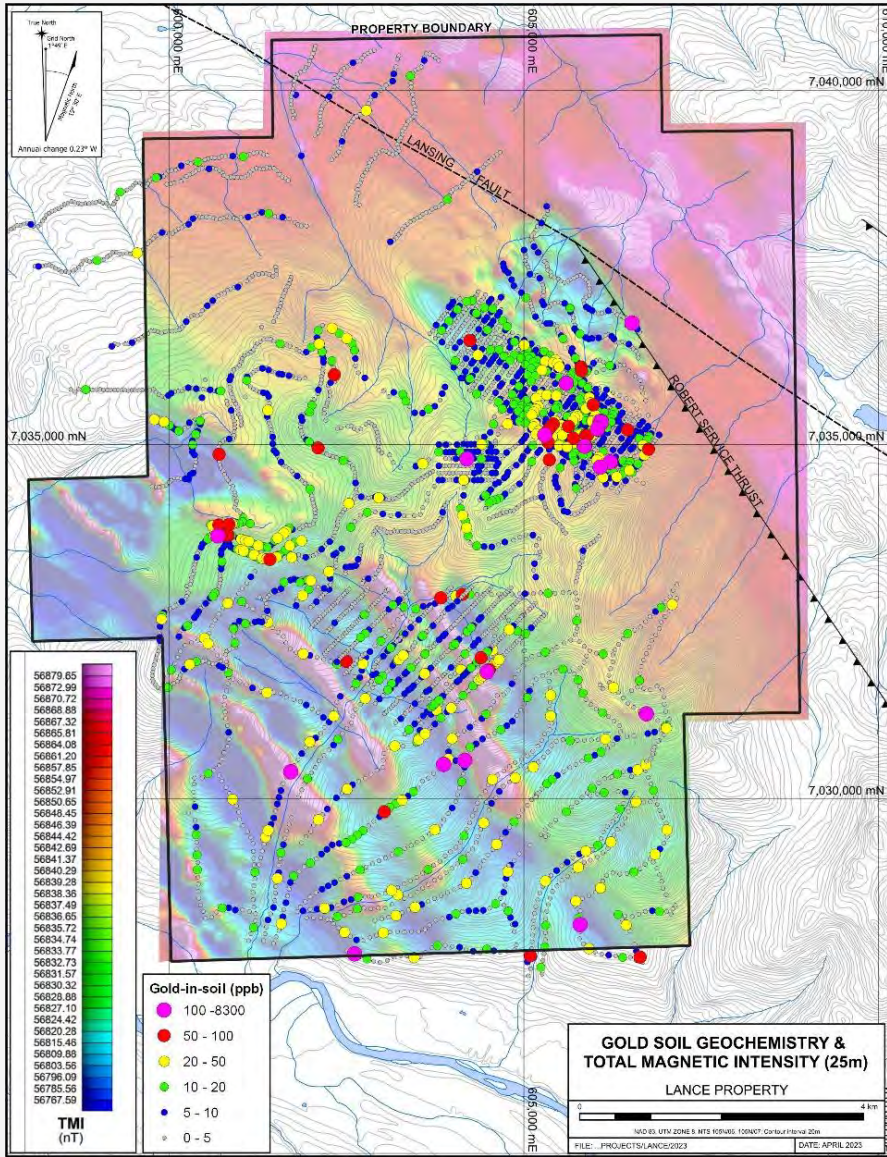


# Mt. Hinton

High-grade gold vein  
-Southwest Zone

MH-20-018: 9.75 m @ 3.86 g/t gold  
and 182 g/t silver





## Lance RIRGS

Large gold and arsenic geochemical anomalies coincident with magnetic low features.

Sheeted quartz veining within a mapped intrusion identified in 2023.

Snowline's Valley discovery to scale: ○

## Lance Property Quartz Veining



## Untested gold & arsenic anomalies over magnetic lows

### 🕒 Lance previous work:

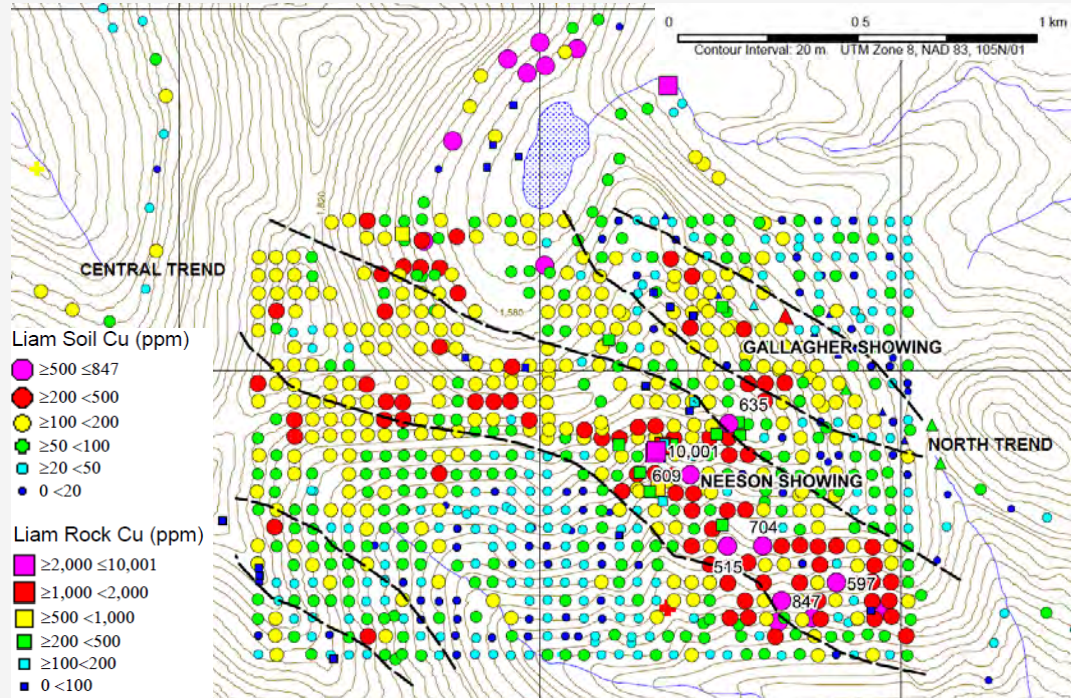
- ✓ Over \$275,000 incurred since 2018
- ✓ 10,610 hectare property in good standing through to March 31, 2027 and 2028.
- ✓ Prospecting, mapping, soil sampling, airborne magnetics and radiometrics.

### 🚩 Findings:

- ✓ Magnetic lows with coincident gold & arsenic geochemistry
- ✓ Localized tungsten and bismuth anomalies and aplite dykes could represent proximal intrusion.
- ✓ Sheeted quartz veining in Tombstone suite intrusion.

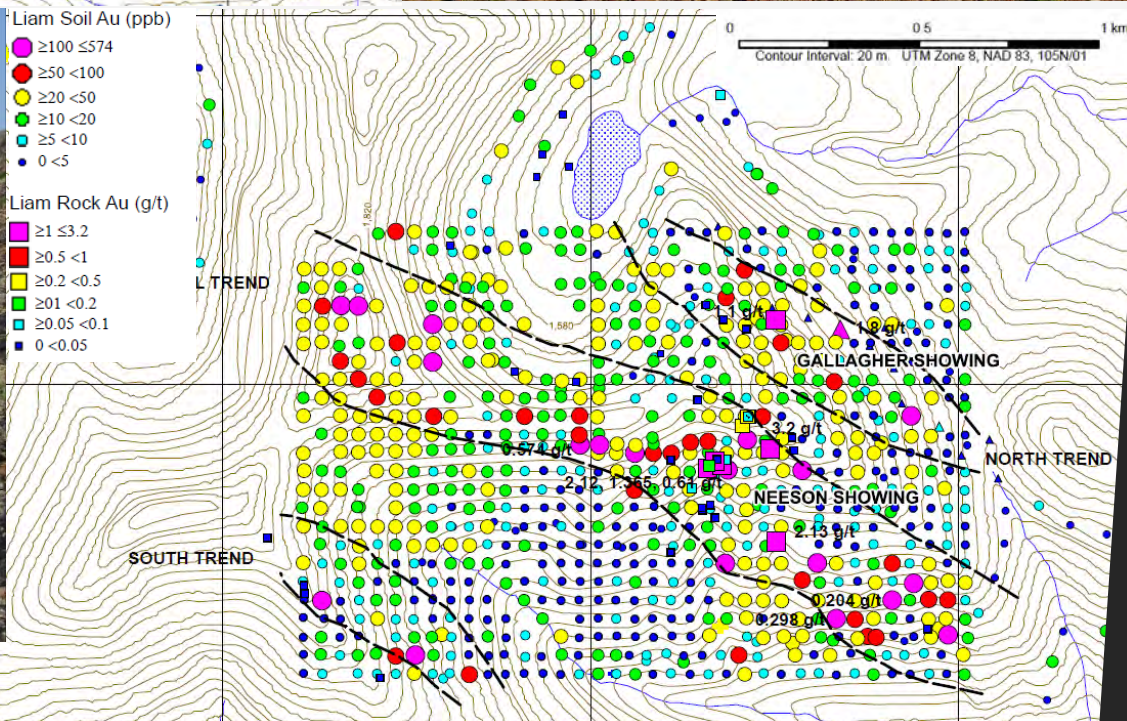
### 🔧 Next Steps:

- ➔ Detailed ground-work to refine RIRGS drill targets



# Liam Copper-Gold Porphyry?

Large gold and copper  
geochemical anomalies



**RYE PROPERTY 2024 –  
Sheeted quartz veining  
surrounded by glacial till**



## Further Opportunities

# Additional targets in the belt



7 additional regional targets are included in the package, namely: Lois, Leroy, Luke, Leah, Lisa, Husky and Naws



Additional 7,000-hectare land position.



Staked based on RGS anomalies, magnetic features and historical data



Initial reconnaissance and some grid soil sampling complete



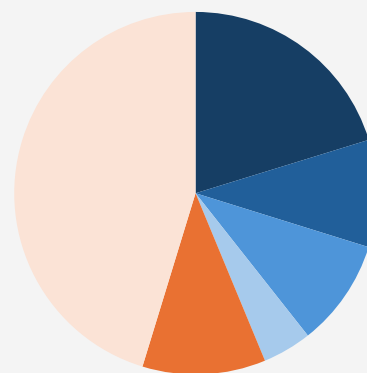
\$500,000 recent expenditures by Strategic Metals (more historically)



## Trifecta Gold Ltd. | TSX.V:TG | OTCQB:TRRFF

Shares Outstanding	47,701,721
Options \$0.15-\$0.40	3,158,750
Warrants \$0.40 May 15, 2027	7,391,184
Fully Diluted	58,251,655
Market Capitalization	~\$11,000,000
Working Capital*	~\$3,000,000
Corporate Debt	0

## Significant Holders



Condire Investors, LLC	19.9%
Crescat Capital	9.4%
HNW Investor	9.4%
Strategic Metals Ltd.	4.3%
Insiders & Key Consultants Excluding Condire Investors	10.8%
<b>Total</b>	<b>~53.8%</b>

\* As of May 6, 2026

# Why Invest in Trifecta Now?

Award winning team with a track record of discovery

Multiple shots for a major Snowline-like RIRGS discovery

- Enormous upside, backstopped by an extensive road accessible vein system, located next to an operating mill

Tight Share Structure:

- 47 million shares outstanding (leverage)
- High insider ownership (over 30%)
- No seed stock (aligned with shareholders)

Financed for discovery:

- \$3 million in the treasury and no debt

Record Gold Price:

- All time high gold prices are not yet reflected in the exploration space



PEOPLE

PROJECTS

TIMING



# Structured for Success vs. Tombstone Gold Belt Explorers

	Trifecta Gold	Rackla Metals	Sitka Gold	Snowline Gold	Prospector Metals Corp	Banyan Gold
Shares Outstanding	47,700,000	166,500,000	423,300,00	179,500,000	158,300,000	443,000,000
Share price*	\$0.22	\$0.16	\$1.10	\$16.00	\$1.70	\$1.42
Market Capitalization	\$11,00,000	\$26,600,000	\$465,600,000	\$2,832,000,000	\$146,000,000	\$629,000,000
Cash Position**	\$3,000,000	\$9,500,000	\$45,000,000	\$100,000,000	\$43,000,000	\$70,000,000
Key Yukon Projects	Mt. Hinton and Rye	Grad, NWT & Astro, Yukon	RC Gold / Clear Creek	Valley deposit	Mike Lake	AurMac
Secondary projects	Lance & 10 others, Yukon	Black, Flat & others, Yukon	Alpha Gold & others, Nevada	Einerson, Yukon	Devon & others, Ontario	Hyland Gold, Yukon
Deposit status	Drill discoveries and active placer	exploration	5.1 MozAu resource est.	8.9 MozAu resource est.	Drill discoveries	7.7 MozAu resource est.
Accessibility	Road	Helicopter	Road	Fixed wing and Helicopter	Helicopter	Road
Last finance price	0.27 hard and 0.38 FT	0.15 hard and 0.21 FT	1.54 FT	9.00 hard	0.97 hard 1.00 FT	1.40 hard 1.91 FT
Last financing - Implied market cap	\$18,000,000	\$34,200,000	\$645,000,000	\$1,558,000,000	\$158,000,000	\$846,100,000

\*as of May 12, 2026 \*\*From most recent company presentation or Financial Statements, FT= Flow Through.



TRIFECTA  
GOLD LTD.

---

510-1100 Melville Street  
Vancouver BC  
604-687-2522  
info@trifectagold.com